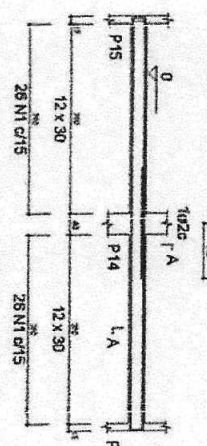
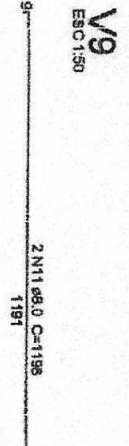


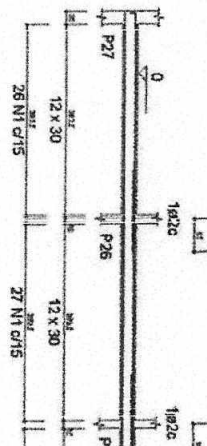
V10
 ESC 1:50
 1 N30 Ø8.0 C=220
 2 N29 Ø8.0 C=624



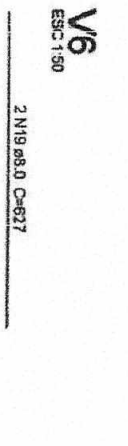
V11
 ESC 1:50
 1 N33 Ø8.0 C=126
 2 N34 Ø8.0 C=470
 1 N33 Ø8.0 C=126
 2 N32 Ø8.0 C=422



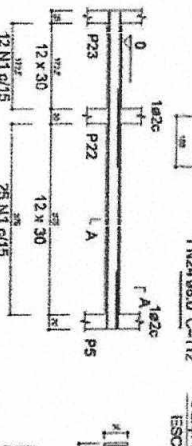
V12
 ESC 1:50
 2 N28 Ø8.0 C=424
 2 N27 Ø8.0 C=528



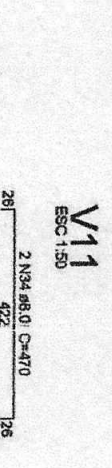
V13
 ESC 1:50
 2 N16 Ø8.0 C=423
 2 N28 Ø8.0 C=424
 2 N35 Ø8.0 C=417



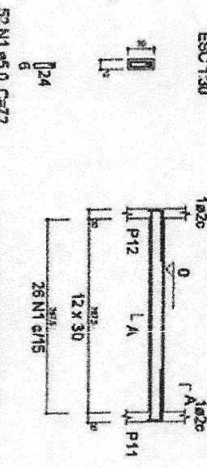
V14
 ESC 1:50
 2 N28 Ø8.0 C=424
 2 N29 Ø8.0 C=424



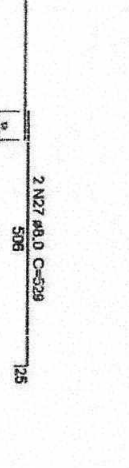
V15
 ESC 1:50
 1 N9 Ø8.0 C=155
 1 N24 Ø8.0 C=112
 2 N19 Ø8.0 C=627
 2 N29 Ø8.0 C=424
 2 N37 Ø8.0 C=274



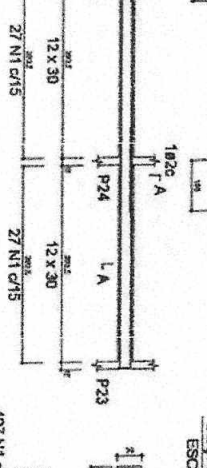
V16
 ESC 1:50
 1 N5 Ø8.0 C=180
 1 N7 Ø8.0 C=185
 1 N26 Ø8.0 C=185



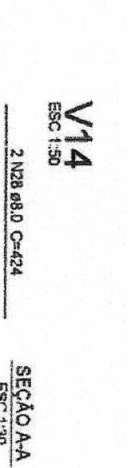
V17
 ESC 1:50
 2 N2 Ø8.0 C=820
 107 N1 Ø5.0 C=72



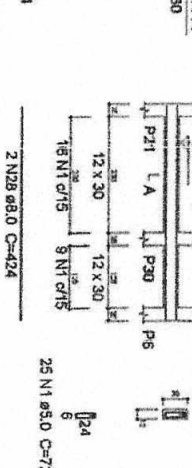
V18
 ESC 1:50
 2 N28 Ø8.0 C=424
 25 N1 Ø5.0 C=72



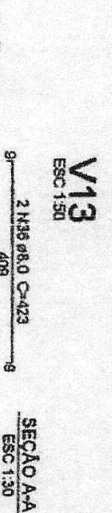
V19
 ESC 1:50
 2 N37 Ø8.0 C=274
 16 N1 Ø5.0 C=72



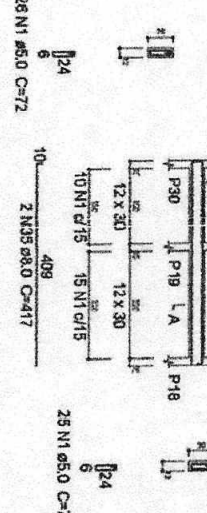
V20
 ESC 1:50
 1 N9 Ø8.0 C=155
 1 N24 Ø8.0 C=112
 2 N19 Ø8.0 C=627
 2 N29 Ø8.0 C=424
 2 N37 Ø8.0 C=274



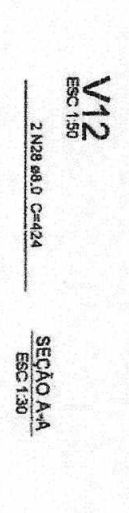
V21
 ESC 1:50
 1 N9 Ø8.0 C=155
 1 N24 Ø8.0 C=112
 2 N19 Ø8.0 C=627
 2 N29 Ø8.0 C=424
 2 N37 Ø8.0 C=274



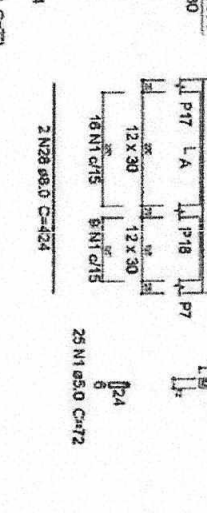
V22
 ESC 1:50
 1 N9 Ø8.0 C=155
 1 N24 Ø8.0 C=112
 2 N19 Ø8.0 C=627
 2 N29 Ø8.0 C=424
 2 N37 Ø8.0 C=274



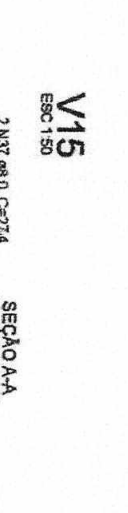
V23
 ESC 1:50
 1 N9 Ø8.0 C=155
 1 N24 Ø8.0 C=112
 2 N19 Ø8.0 C=627
 2 N29 Ø8.0 C=424
 2 N37 Ø8.0 C=274



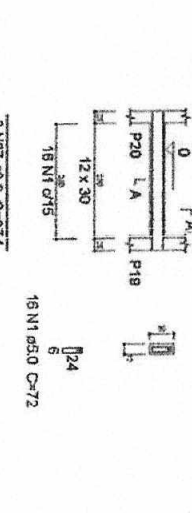
V24
 ESC 1:50
 1 N9 Ø8.0 C=155
 1 N24 Ø8.0 C=112
 2 N19 Ø8.0 C=627
 2 N29 Ø8.0 C=424
 2 N37 Ø8.0 C=274



V25
 ESC 1:50
 1 N9 Ø8.0 C=155
 1 N24 Ø8.0 C=112
 2 N19 Ø8.0 C=627
 2 N29 Ø8.0 C=424
 2 N37 Ø8.0 C=274



V26
 ESC 1:50
 1 N9 Ø8.0 C=155
 1 N24 Ø8.0 C=112
 2 N19 Ø8.0 C=627
 2 N29 Ø8.0 C=424
 2 N37 Ø8.0 C=274



V27
 ESC 1:50
 1 N9 Ø8.0 C=155
 1 N24 Ø8.0 C=112
 2 N19 Ø8.0 C=627
 2 N29 Ø8.0 C=424
 2 N37 Ø8.0 C=274

Relatório do aço

ACO	N	DIAM	QUANT	UNID	COTOTAL
		(mm)	(unidade)		(m³)
V1	1	8.0	783	12	5578
V2	2	8.0	2	1011	282
V3	3	8.0	2	1119	2228
V4	4	8.0	2	413	828
V5	5	8.0	2	180	320
V6	6	8.0	2	148	370
V7	7	8.0	1	190	190
V8	8	8.0	3	155	465
V9	9	8.0	1	195	195
V10	10	8.0	4	150	4702
V11	11	8.0	2	1130	2400
V12	12	8.0	2	1132	2468
V13	13	8.0	1	1113	4472
V14	14	8.0	4	1113	1542
V15	15	8.0	2	831	1892
V16	16	8.0	2	832	1892
V17	17	8.0	2	442	1092
V18	18	8.0	2	442	1092
V19	19	8.0	2	825	1848
V20	20	8.0	2	825	1848
V21	21	8.0	2	280	728
V22	22	8.0	2	888	1728
V23	23	8.0	2	818	1636
V24	24	8.0	2	112	112
V25	25	8.0	1	112	112
V26	26	8.0	2	112	112
V27	27	8.0	2	112	112
V28	28	8.0	2	112	112
V29	29	8.0	2	112	112
V30	30	8.0	2	112	112
V31	31	8.0	2	112	112
V32	32	8.0	2	112	112
V33	33	8.0	2	112	112
V34	34	8.0	2	112	112
V35	35	8.0	2	112	112
V36	36	8.0	2	112	112
V37	37	8.0	4	423	864
V38	38	8.0	4	274	1088

Resumo do aço

ACO	DIAM	COTOTAL	PESO
	(mm)	(m³)	(kg)
CABO	8.0	157.4	15912
CABO	5.0	353.8	882
FIBRO TOTAL			
CABO	8.0	212	212
CABO	5.0	50.24	50.24

Volume de concreto (C-25) = 4.53 m³
 Área de forma = 80.24 m²

[Signature]
Renan Rocha Aquino
 Engenheiro Civil
 CRE: 028.082.843-08
 RNP: 081356832-8

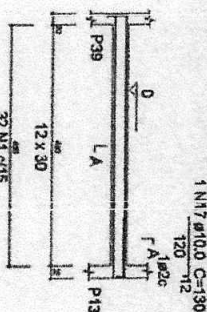
PROJETO ESTRUTURAL

GOVERNO MUNICIPAL DE URUGUAI

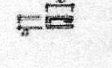
REMAN ROCHA AQUINO

REMAN ROCHA AQUINO

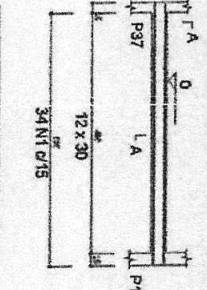
V16
 ESC 1:50
 2 N18 ø10.0 C=583
 1 N17 ø10.0 C=130
 120 112
 12



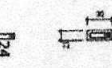
SEÇÃO AA
 ESC 1:30



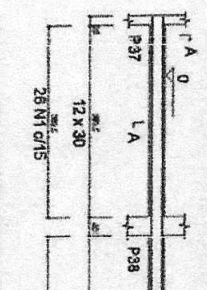
V18
 ESC 1:50
 2 N11 ø8.0 C=519



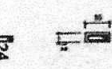
SEÇÃO AA
 ESC 1:30



V19
 ESC 1:50
 2 N12 ø8.0 C=824



SEÇÃO AA
 ESC 1:30



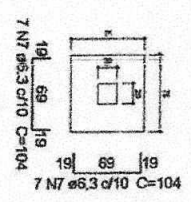
Relatório do aço

Item	Qtd	Unid	Valor
B.P1	4479	P37	2358
P38	2421	P38	1489
P39	5431	P39	1888
V18	100	V18	1130
V22	100	V22	1130
V25	100	V25	1130
TOTAL			2358

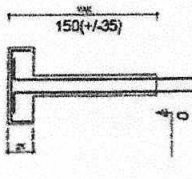
Resumo do aço

Item	Qtd	Unid	Valor
Caso 1	5.0	kg	231
Caso 2	5.0	kg	231
Caso 3	5.0	kg	231
Caso 4	5.0	kg	231
Caso 5	5.0	kg	231
Caso 6	5.0	kg	231
Caso 7	5.0	kg	231
Caso 8	5.0	kg	231
Caso 9	5.0	kg	231
Caso 10	5.0	kg	231
Caso 11	5.0	kg	231
Caso 12	5.0	kg	231
Caso 13	5.0	kg	231
Caso 14	5.0	kg	231
Caso 15	5.0	kg	231
Caso 16	5.0	kg	231
Caso 17	5.0	kg	231
Caso 18	5.0	kg	231
Caso 19	5.0	kg	231
Caso 20	5.0	kg	231
TOTAL			2358

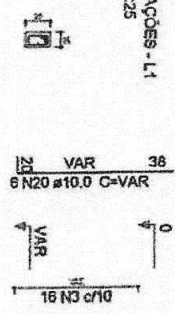
S39
 PLANTA
 ESC 1:25



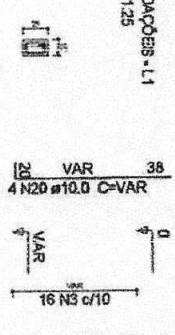
CORTE
 ESC 1:25



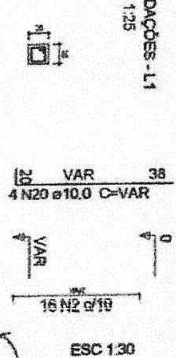
P15
 FUNDAÇÕES - L1
 ESC 1:25



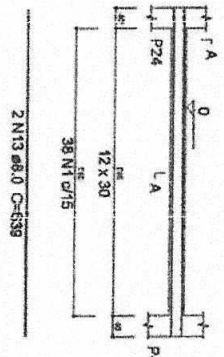
P9=P18=P25=P28
 FUNDAÇÕES - L1
 ESC 1:25



P37
 FUNDAÇÕES - L1
 ESC 1:25



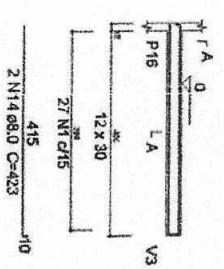
V23
 ESC 1:50
 2 N19 ø10.0 C=639



SEÇÃO AA
 ESC 1:30



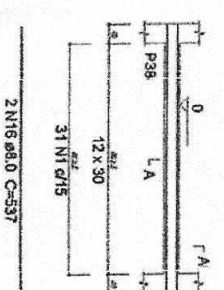
V24
 ESC 1:50
 2 N15 ø8.0 C=435



SEÇÃO AA
 ESC 1:30



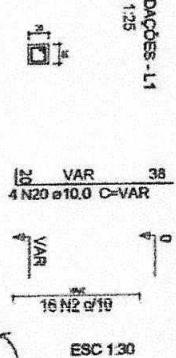
V25
 ESC 1:50
 2 N16 ø8.0 C=537



SEÇÃO AA
 ESC 1:30



P14
 FUNDAÇÕES - L1
 ESC 1:25



Solo compactado sobre a sapata
 peso específico = 1600.00 kg/m³

Volume de concreto (C=25) = 2.8 m³
 Volume de concreto (C=20) = 2.82 m³
 Área de forma = 88.55 m²

Regen Rocha Aquino
 Engenheiro Civil
 CREA-CE: 54.184-D
 CPF: 029.092.849-02
 RNP: 081356332-5

PROPOSTA PARA OBRAS DE RECONSTRUÇÃO DE OBRAS DE INFRAESTRUTURA DE SANEAMENTO BÁSICO - PROJETO ESTRUTURAL

EMPRESA: REGEN ROCHA AQUINO

PROPOSTA Nº: 001/2023

VALOR: R\$ 1.000,00

DATA: 15/05/2023

P22

FUNDAÇÕES - L1
 ESC 1:25



VAR 38
 4 N15 Ø10.0 C=VAR



ESC 1:30

P3=P29

FUNDAÇÕES - L1
 ESC 1:25



VAR 38
 4 N15 Ø10.0 C=VAR



ESC 1:30

P8

FUNDAÇÕES - L1
 ESC 1:25



VAR 38
 6 N15 Ø10.0 C=VAR



ESC 1:30

P16

FUNDAÇÕES - L1
 ESC 1:25



VAR 47
 4 N16 Ø12.5 C=VAR



ESC 1:30

P5

FUNDAÇÕES - L1
 ESC 1:25

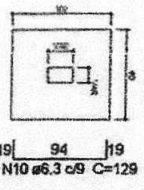


VAR 38
 6 N15 Ø10.0 C=VAR



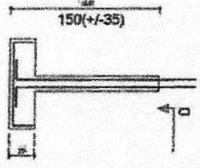
ESC 1:30

S5=S13=S16
 PLANTA
 ESC 1:25

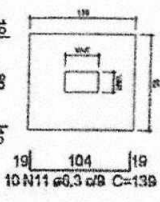


Solo compactado sobre a sapata
 peso específico > 1600,00 kg/m³

CORTE
 ESC 1:25

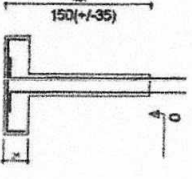


S4=S12=S24=S26
 PLANTA
 ESC 1:25



Solo compactado sobre a sapata
 peso específico > 1600,00 kg/m³

CORTE
 ESC 1:25



P2

FUNDAÇÕES - L1
 ESC 1:25

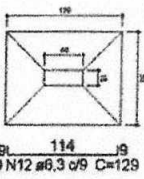


VAR 47
 12 N16 Ø12.5 C=VAR



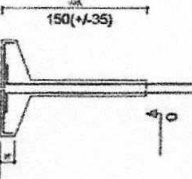
ESC 1:30

S2
 PLANTA
 ESC 1:25



Solo compactado sobre a sapata
 peso específico > 1600,00 kg/m³

CORTE
 ESC 1:25



Relação do aço

ACO	N	DIAM (mm)	QUANT (Barras)	UNIT (cm)	C.TOTAL (cm)
CA50	1	5,0	59	78	4602
	2	5,0	48	68	3254
	3	5,0	16	88	1568
	4	5,0	44	98	4312
	5	5,0	40	24	960
	6	5,0	50	114	2664
	7	6,3	30	128	3670
	8	6,3	38	119	4294
	9	6,3	38	129	4980
	10	6,3	40	129	5560
	11	6,3	40	129	5560
	12	6,3	40	129	5560
	13	8,0	40	123	4920
	14	8,0	40	103	4133
	15	10,0	36	113	4020
	16	12,5	52	113	5920
	17	16,0	8	260	10400
	18	16,0	40	275	12650
	19	16,0	45	275	12650

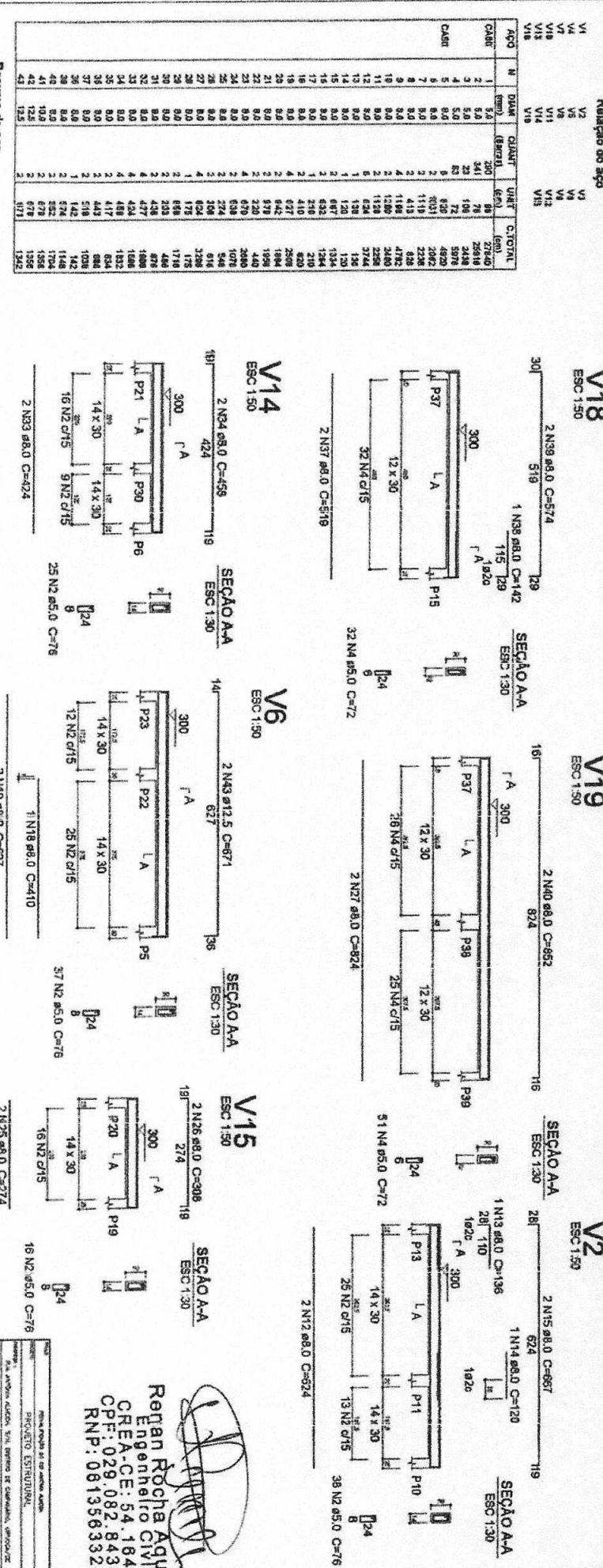
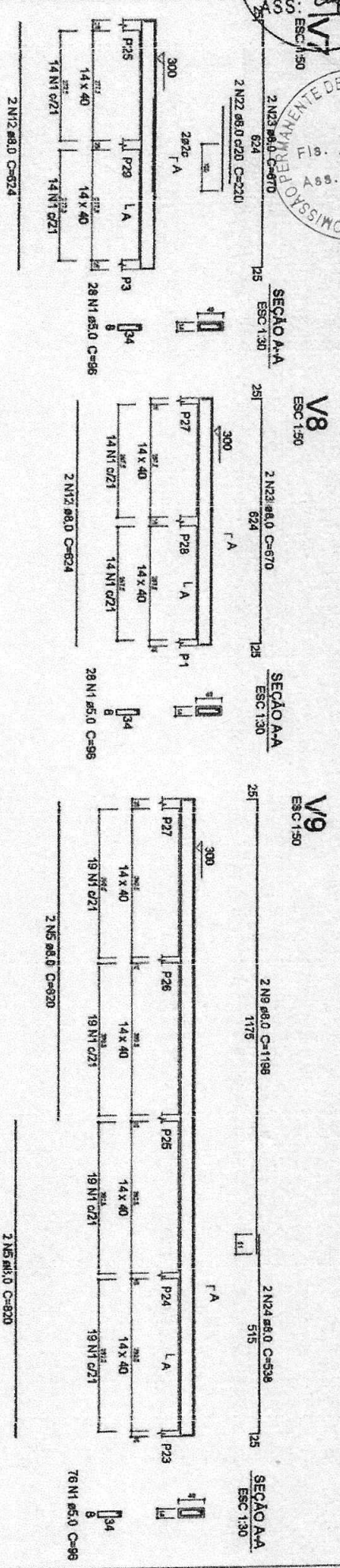
Resumo do aço

ACO	DIAM (mm)	C.TOTAL (m)	PESO (kg)
CA50	6,3	256,7	62,8
CA50	8,0	60,6	23,8
CA50	10,0	74,2	48,7
CA50	12,5	111,3	107,2
CA50	16,0	248,6	382,3
CA50	5,0	173,7	20,8
PESO TOTAL			208,8
CA50			632
CA80			29,8

Volume de concreto (C-25) = 1,38 m³
 Volume de concreto (C-20) = 7,91 m³
 Área de forma = 39 m²

[assinatura]
Renan Rocha Aquino
 Engenheiro Civil
 CREA-CE: 54.184-D
 CPF: 029.082.843-08
 RNP: 081356332-8

PROJETO DE OBRAS
 PROJETO ESTRUTURAL
 GOVERNO MUNICIPAL DE ITABOARA
 HONRA RENAN ROCHA AQUINO
 RENAN ROCHA AQUINO



ACO	N	DIA	QUANT.	UNIT.	C.TOTAL
CAHR	1	5.0	200	m	2200.0
CAHR	2	5.0	200	m	2200.0
CAHR	3	5.0	200	m	2200.0
CAHR	4	5.0	200	m	2200.0
CAHR	5	5.0	200	m	2200.0
CAHR	6	5.0	200	m	2200.0
CAHR	7	5.0	200	m	2200.0
CAHR	8	5.0	200	m	2200.0
CAHR	9	5.0	200	m	2200.0
CAHR	10	5.0	200	m	2200.0
CAHR	11	5.0	200	m	2200.0
CAHR	12	5.0	200	m	2200.0
CAHR	13	5.0	200	m	2200.0
CAHR	14	5.0	200	m	2200.0
CAHR	15	5.0	200	m	2200.0
CAHR	16	5.0	200	m	2200.0
CAHR	17	5.0	200	m	2200.0
CAHR	18	5.0	200	m	2200.0
CAHR	19	5.0	200	m	2200.0
CAHR	20	5.0	200	m	2200.0
CAHR	21	5.0	200	m	2200.0
CAHR	22	5.0	200	m	2200.0
CAHR	23	5.0	200	m	2200.0
CAHR	24	5.0	200	m	2200.0
CAHR	25	5.0	200	m	2200.0
CAHR	26	5.0	200	m	2200.0
CAHR	27	5.0	200	m	2200.0
CAHR	28	5.0	200	m	2200.0
CAHR	29	5.0	200	m	2200.0
CAHR	30	5.0	200	m	2200.0
CAHR	31	5.0	200	m	2200.0
CAHR	32	5.0	200	m	2200.0
CAHR	33	5.0	200	m	2200.0
CAHR	34	5.0	200	m	2200.0
CAHR	35	5.0	200	m	2200.0
CAHR	36	5.0	200	m	2200.0
CAHR	37	5.0	200	m	2200.0
CAHR	38	5.0	200	m	2200.0
CAHR	39	5.0	200	m	2200.0
CAHR	40	5.0	200	m	2200.0
CAHR	41	5.0	200	m	2200.0
CAHR	42	5.0	200	m	2200.0
CAHR	43	5.0	200	m	2200.0

Resumo do aço

ACO	QTD	C.TOTAL	PESO
CAHR	6.0	666.6	223.1
CAHR	10.0	1111.1	371.7
CAHR	12.5	1388.9	464.6
CAHR	27	2967.3	989.3
CAHR	12.5	1388.9	464.6
CAHR	27	2967.3	989.3
CAHR	257.5	2781.1	923.3
CAHR	85.8	906.9	300.0

Volume de concreto (C-25) = 678 m³
Área de forma = 1173 m²

Renan Rocha Aquino
Engenheiro Civil
CREA-CE: 54.184-D
CPF: 029.082.843-08
RNP: 061356332-8

PROJETO ESTRUTURAL
SÉRIE: PROJ. CIVIL

GOVERNADORIA DO PIAUÍ
SECRETARIA DE INFRAESTRUTURA
SECRETARIA DE OBRAS E SERVIÇOS DE ENGENHARIA

REMAN ROCHA AQUINO
SECRETARIA DE OBRAS E SERVIÇOS DE ENGENHARIA

SECRETARIA DE OBRAS E SERVIÇOS DE ENGENHARIA

SECRETARIA DE OBRAS E SERVIÇOS DE ENGENHARIA

SECRETARIA DE OBRAS E SERVIÇOS DE ENGENHARIA

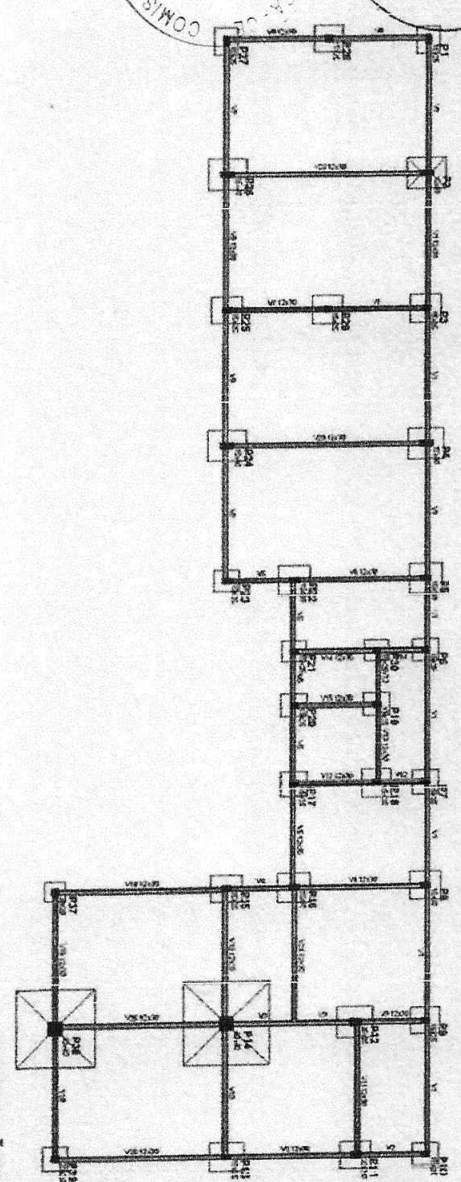
SECRETARIA DE OBRAS E SERVIÇOS DE ENGENHARIA

SECRETARIA DE OBRAS E SERVIÇOS DE ENGENHARIA

SECRETARIA DE OBRAS E SERVIÇOS DE ENGENHARIA

SECRETARIA DE OBRAS E SERVIÇOS DE ENGENHARIA

SECRETARIA DE OBRAS E SERVIÇOS DE ENGENHARIA

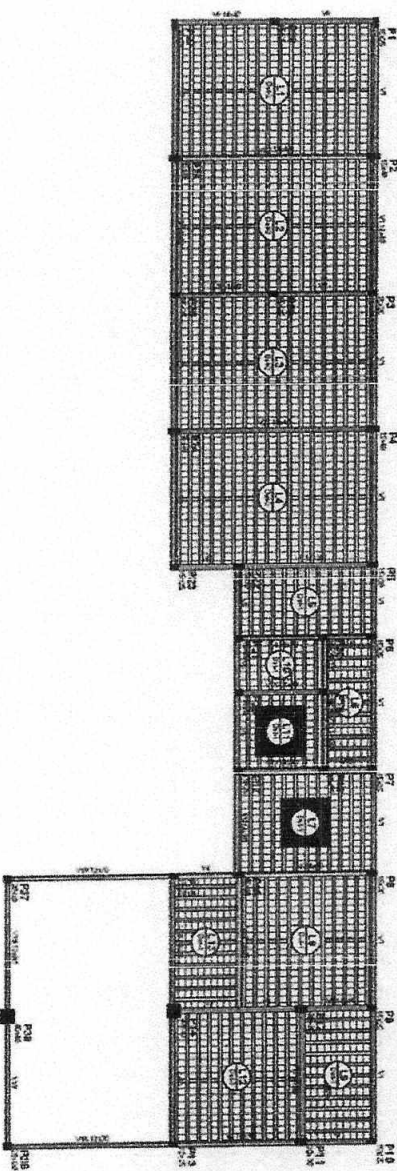


Forma do pavimento FUNDIÇÕES
 escala 1:75

Item	Descrição	Quantidade	Valor Unitário	Valor Total
1
2
3
4
5
6
7
8
9
10
11
12
13
14
15
16
17
18
19
20
21
22
23
24
25
26
27
28
29
30
31
32
33
34
35
36
37
38
39
40
41
42
43
44
45
46
47
48
49
50

Item	Descrição	Quantidade	Valor Unitário	Valor Total
1
2
3
4
5
6
7
8
9
10
11
12
13
14
15
16
17
18
19
20
21
22
23
24
25
26
27
28
29
30
31
32
33
34
35
36
37
38
39
40
41
42
43
44
45
46
47
48
49
50

Detalhe	Tipo	Nome	Dimensões (cm)	Quantidade
1/2	Linha cerâmica	B3,25/20	8 x 25 x 20	2333



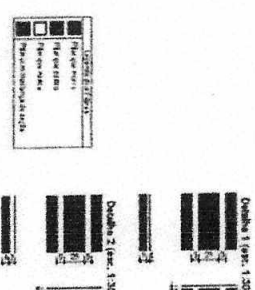
Forma do pavimento TERREO
 escala 1:75

Item	Descrição	Quantidade	Valor Unitário	Valor Total
1
2
3
4
5
6
7
8
9
10
11
12
13
14
15
16
17
18
19
20
21
22
23
24
25
26
27
28
29
30
31
32
33
34
35
36
37
38
39
40
41
42
43
44
45
46
47
48
49
50

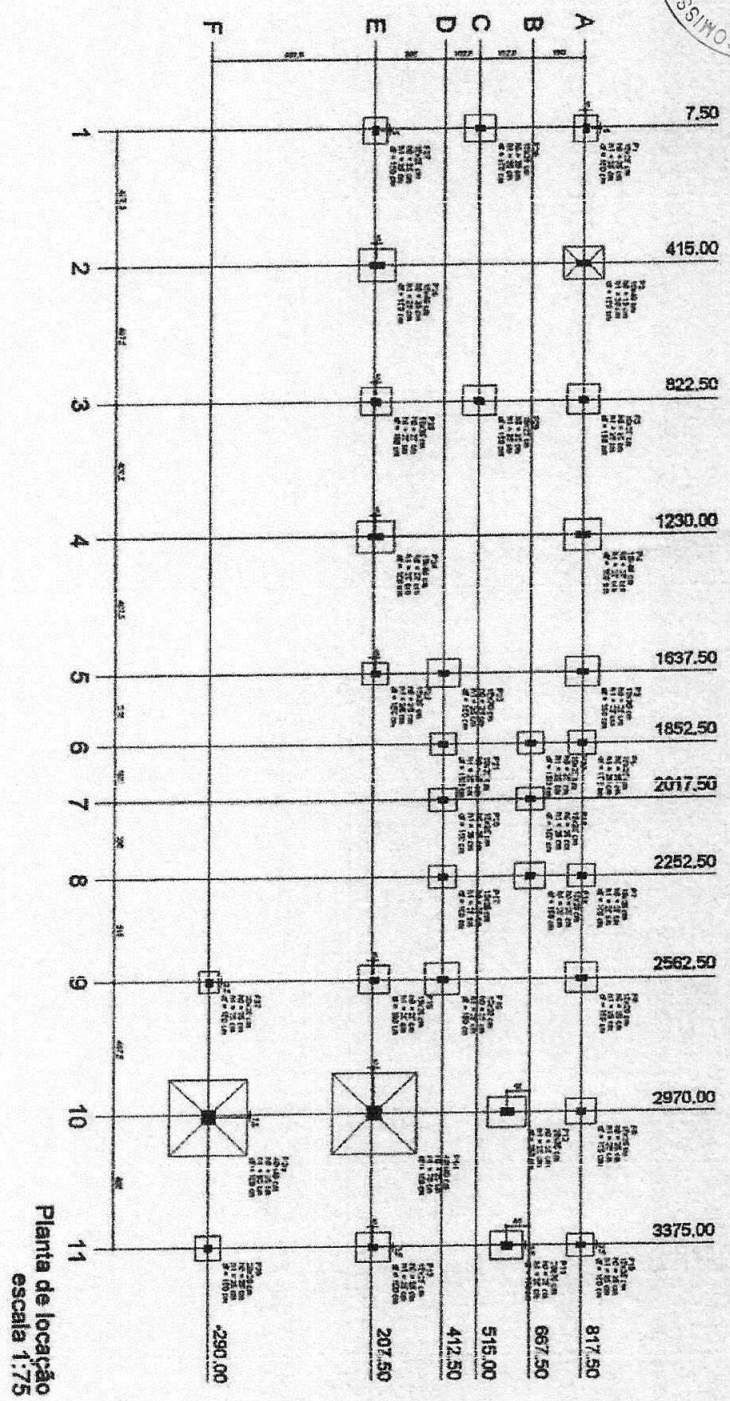
Item	Descrição	Quantidade	Valor Unitário	Valor Total
1
2
3
4
5
6
7
8
9
10
11
12
13
14
15
16
17
18
19
20
21
22
23
24
25
26
27
28
29
30
31
32
33
34
35
36
37
38
39
40
41
42
43
44
45
46
47
48
49
50

Item	Descrição	Quantidade	Valor Unitário	Valor Total
1
2
3
4
5
6
7
8
9
10
11
12
13
14
15
16
17
18
19
20
21
22
23
24
25
26
27
28
29
30
31
32
33
34
35
36
37
38
39
40
41
42
43
44
45
46
47
48
49
50

[Assinatura]
 Regan Rocha Aquino
 Engenheiro Civil
 CREA-CE: 54.164-D
 CPF: 029.082.843-08
 RNF: 081356332-8



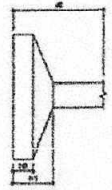
PROJETO DE LICITAÇÃO Nº 001/2014
 GOVERNO MUNICIPAL DE LARANJA
 PREFEITO ESTANISLAU
 PROJETO ESTRUTURAL
 Rua Antônio Augusto, s/n, Centro de Laranjas, Pernambuco
 CEP: 55.000-000
 REGAN ROCHA AQUINO
 REGISTRO Nº 54.164-D
 CPF: 029.082.843-08
 RNF: 081356332-8



Item	Descrição	Quantidade	Valor Unitário	Valor Total
1
2
3
4
5
6
7
8
9
10
11

Item	Descrição	Quantidade	Valor Unitário	Valor Total
12
13
14
15
16
17
18
19
20

Item	Descrição	Quantidade	Valor Unitário	Valor Total
21
22
23
24
25
26
27
28
29
30



PROVA DE QUALIDADE DA ÁGUA
 PROJETO ESTIMATIVO
 GOVERNO MUNICIPAL DE URUGUAI
 REPLAN ROCHA AQUINO
 RNSUN ROCHA AQUINO

[Signature]
Replan Rocha Aquino
 Engenheiro Civil
 CREA-CE: 54.184-D
 CPF: 029.082.843-08
 RNP: 081356332-8