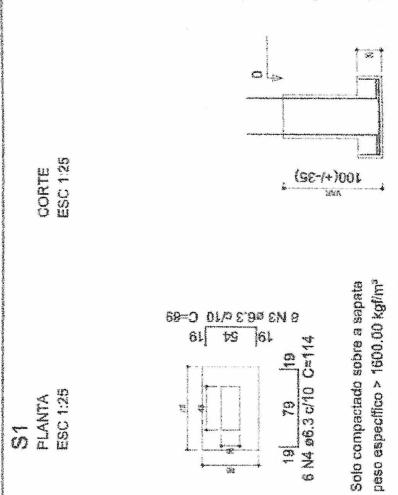




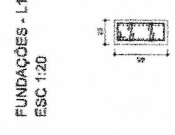


**LAESTE L.M. FREIRE**  
**ENGENHEIRO CIVIL**  
**CREA-CE 322353**

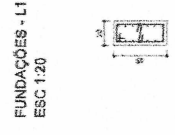
PRIMA DA LICITAÇÃO	
PROJETO ESTRUTURAL	
MUNICÍPIO: SÃO CARLOS, S/A. DISTRITO DE PARAGUÁ, URUBICI/CE	
PROPOSTANTE: LAESTE L.M. FREIRE	
EMPRESA: LAESTE L.M. FREIRE	
CNPJ: 00.000.000/0000-00	
RUA: RUA DA PÁTRIA	
Cidade: SÃO CARLOS - SP	
Estado: SP	
CEP: 13506-900	
Telefone: (19) 3333-3333	
E-mail: laeste@laeste.com.br	
Assinatura: <i>[Assinatura]</i>	
Data: 13/08/2013	



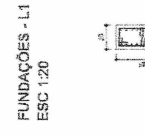
**P8**



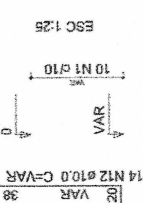
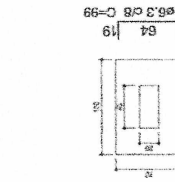
**P7=P10=P12=P14**



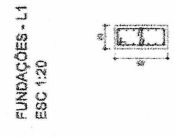
**P1**



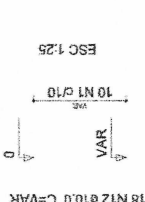
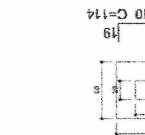
**S2=S3**



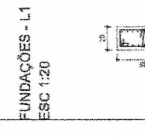
**P3**



**S9**



**P9**

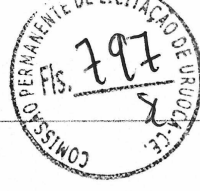


*[Handwritten mark]*

*[Handwritten mark]*







**LASTE LIA FREIRE**  
**ENGENHEIRO CIVIL**  
**CRECA-GE 32293**

DECLARAÇÃO DE RESPONSABILIDADE TÉCNICA  
 PROJETO ESTIMATIVO  
 Rua João Camargo, 549 - Bairro de Paracatu, Uberlândia - Minas Gerais  
 GOVERNO MUNICIPAL DE UBERLÂNDIA  
 LASTE LIA MACHADO FREIRE  
 ENGENHEIRA CIVIL  
 CREA-GE 32293

**Relação do aço**

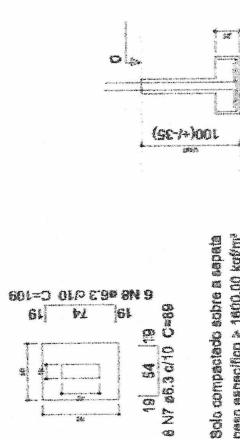
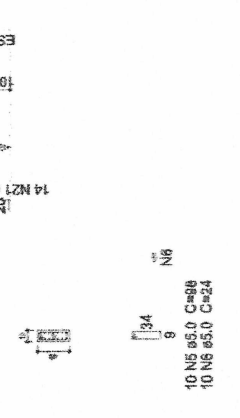
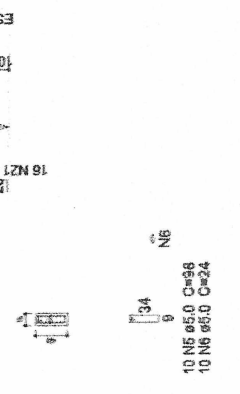
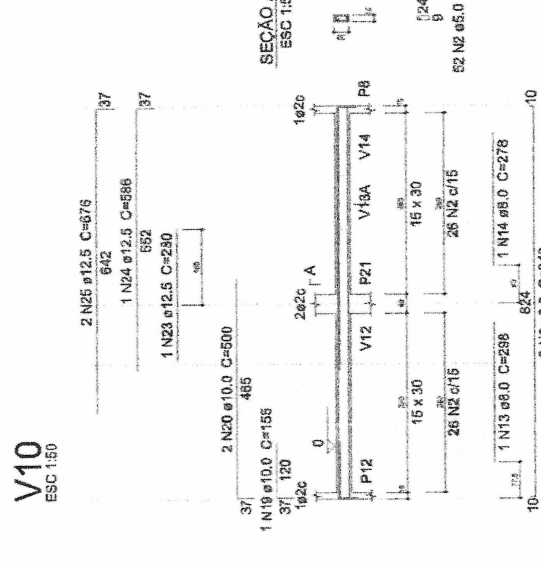
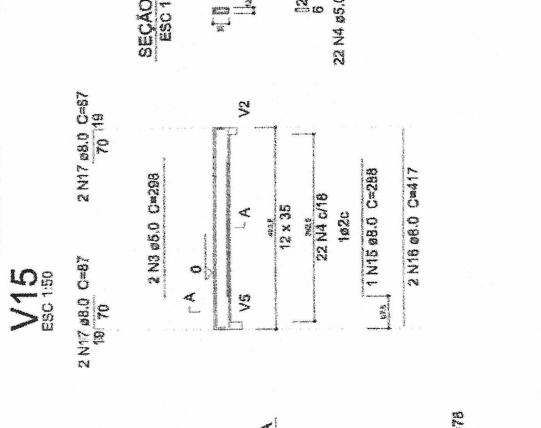
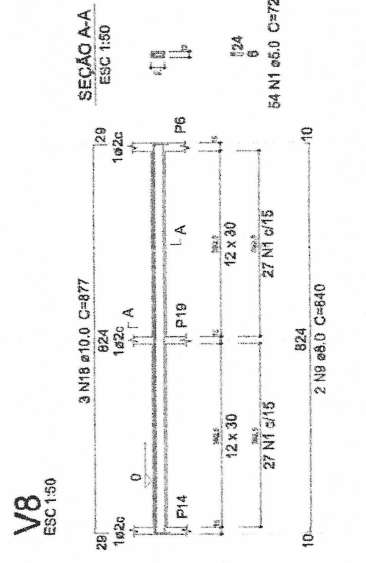
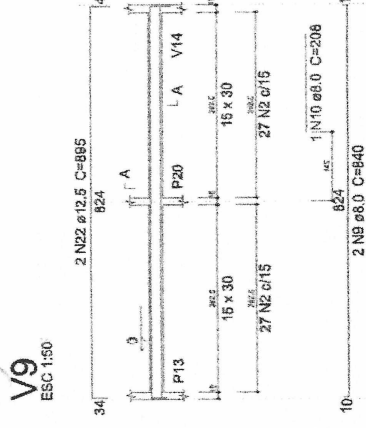
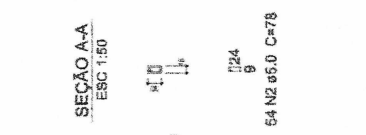
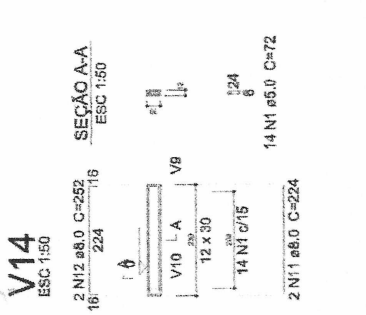
ACO	N	DIAM (mm)	QUANT (Barra)	UNID (cm)	C TOTAL (cm)
CA63	1	5,0	66	72	4896
	2	5,0	109	76	8284
	3	5,0	2	288	576
	4	5,0	2	186	372
CA63	5	5,0	22	186	4092
	6	5,0	30	24	720
	7	8,3	8	99	712
	8	8,3	6	109	906
	9	8,0	6	840	5940
	10	8,0	1	206	206
CA63	11	8,0	2	224	448
	12	8,0	2	252	504
	13	8,0	1	276	276
	14	8,0	1	276	276
	15	8,0	1	288	288
	16	8,0	2	417	834
	17	10,0	4	87	348
	18	10,0	3	877	2831
	19	10,0	1	155	155
	20	10,0	2	500	1000
	21	12,5	40	100	4000
22	12,5	1	280	280	
23	12,5	1	280	280	
24	12,5	1	885	885	
25	12,5	2	876	1752	

**Resumo do aço**

ACO	DIAM (mm)	C TOTAL (m)	PESO (kg)
CA63	5,0	13,7	2,3
CA63	8,0	65,5	32,5
CA63	10,0	100,3	51,9
CA63	12,5	18,0	28,8
PESO TOTAL			115,5

CA63 138,3  
 CA67 25,6

Volume de concreto (C-78) = 1,49 m³  
 Volume do concreto (C-70) = 0,18 m³  
 Área de forma = 27,05 m²



Solo compactado sobre a sapata  
 peso específico = 1800,00 kgf/m³

**Relação do aço**

ACO	N	DIAM (mm)	QUANT (Barras)	UNIT (cm)	C.TOTAL (cm)
CA80	1	5.0	61	98	5978
	2	5.0	7	24	168
	3	5.0	40	24	960
	4	5.0	21	24	504
CA80	5	6.3	40	89	3560
	6	6.3	28	124	3472
	7	6.3	12	104	1248
	8	6.3	7	129	903
VAR	9	10.0	40	VAR	VAR
VAR	10	12.5	10	VAR	VAR
VAR	11	16.0	18	VAR	VAR

**Resumo do aço**

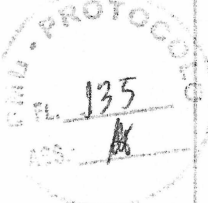
ACO	DIAM (mm)	C.TOTAL (m)	PESO (kg)
CA80	6.3	95.9	23.4
CA80	10.0	52.4	38.5
CA80	12.5	16.4	15.8
CA80	16.0	31.7	50
CA80	5.0	76.1	11.7
PESO TOTAL			
CA80	127.7		
CA80	11.7		

Volume de concreto (C-25) = 0.42 m³  
 Volume de concreto (C-20) = 0.85 m³  
 Area de forma = 11.88 m²



**LAISTE LUI FREIRE**  
**ENGENHEIRO CIVIL**  
**CREA-CE 22293**

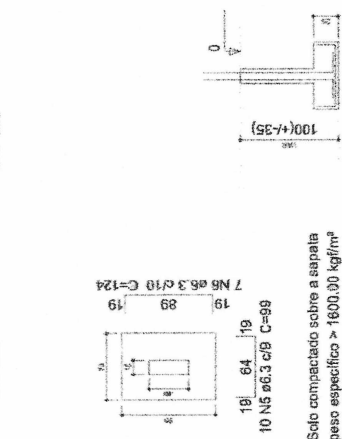
REVISÃO DA OBRA: JORNADA DE OBRA NO TERRENO DE IMPLANTAÇÃO  
 PROJETO ESTRUTURAL  
 PARA O BARRACÃO S/A. CENTRO DE EDUCAÇÃO URBANA/CE  
 MUNICÍPIO DE UBERLÂNDIA  
 GOVERNO MUNICIPAL DE UBERLÂNDIA  
 LAISTE LUI FREIRE  
 LAISTE LUI FREIRE  
 LAISTE LUI FREIRE



**S3=S8=S11=S12**

PLANTA ESC 1:25

CORTE ESC 1:25



Solo compactado sobre a sapata peso especifico > 1600.00 kgf/m³

**P8**

FUNDAÇÃO - L1 ESC 1:30

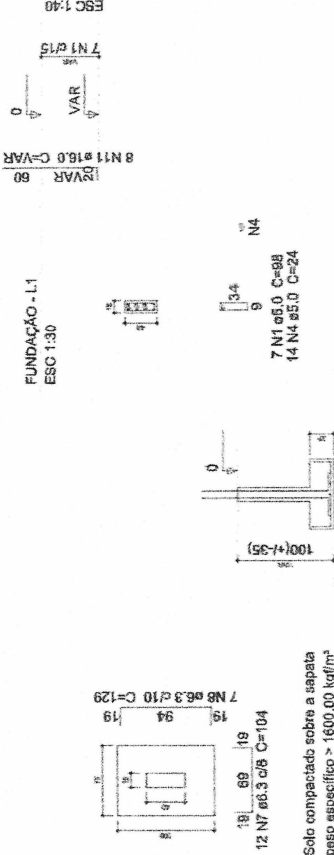


10 N1 Ø5.0 C=88  
 10 N3 Ø5.0 C=24

**S10**

PLANTA ESC 1:25

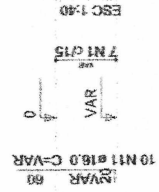
CORTE ESC 1:25



Solo compactado sobre a sapata peso especifico > 1600.00 kgf/m³

**P2**

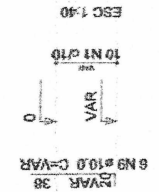
FUNDAÇÃO - L1 ESC 1:30



7 N1 Ø5.0 C=88  
 7 N4 Ø5.0 C=24

**P21**

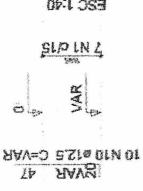
FUNDAÇÃO - L1 ESC 1:30



10 N1 Ø5.0 C=88  
 10 N3 Ø5.0 C=24

**P3**

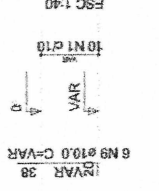
FUNDAÇÃO - L1 ESC 1:30



7 N1 Ø5.0 C=88  
 7 N2 Ø5.0 C=24

**P10**

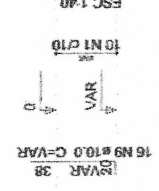
FUNDAÇÃO - L1 ESC 1:30



10 N1 Ø5.0 C=88  
 10 N3 Ø5.0 C=24

**P13**

FUNDAÇÃO - L1 ESC 1:30



10 N1 Ø5.0 C=88  
 10 N3 Ø5.0 C=24







**Relação do aço**

V1 V2 V3

AÇO	N	DIAM (mm)	QUANT (Barras)	UNIT (cm)	C.TOTAL (cm)
CA60	1	5.0	186	98	18228
CA50	2	6.3	7	76	532
	3	8.0	1	240	240
	4	8.0	4	640	3360
	5	8.0	1	113	113
	6	8.0	1	510	510
	7	8.0	2	672	1744
	8	8.0	1	230	230
	9	8.0	2	1015	2030
	10	8.0	2	811	1622
	11	8.0	1	288	288
	12	8.0	2	608	1216
	13	8.0	1	165	165
	14	8.0	1	180	180
	15	8.0	2	220	440
	16	8.0	2	160	360
	17	8.0	2	230	460
	18	8.0	1	270	270
	19	8.0	2	185	370
	20	8.0	2	1188	2386
	21	8.0	2	1200	2400
	22	8.0	2	258	516
	23	10.0	1	255	255
	24	10.0	2	979	1758

**Resumo do aço**

AÇO	DIAM (mm)	C.TOTAL (m)	PESO (kg)
CA60	6.3	5.4	1.3
CA50	8.0	186.9	73.7
CA60	10.0	20.2	12.4
PESO TOTAL		182.3	28.1

Volume de concreto (C-25) = 2.49 m³  
 Área de forma = 38.4 m²



**LASCHE LIA PERINI**  
**ENGENHEIRO CIVIL**  
**CREA-CE 22235**

RESERVA DA PÁGINA CONTÉM AS DADOS PARA O DESENHO DE PLANO DE PROJETO ESTRUTURAL.

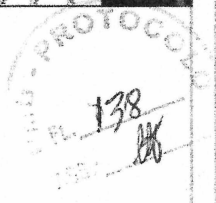
Projeto: Rua 2011, Casa 101, Centro de Fortaleza, FORTALEZA - CE

Proprietário: GOVERNO MUNICIPAL DE FORTALEZA

Projeto: LASCHE LIA PERINI ENGENHEIRO CIVIL

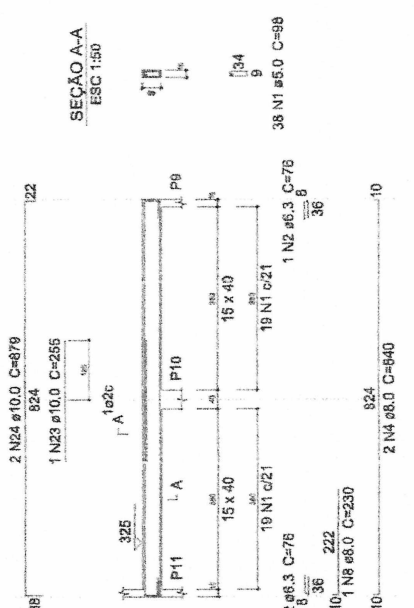
Assinado: LASCHE LIA PERINI ENGENHEIRO CIVIL

Carimbo: LASCHE LIA PERINI ENGENHEIRO CIVIL



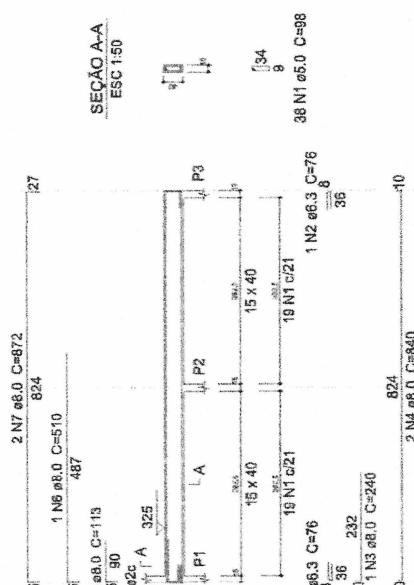
**V3**

ESC 1:50



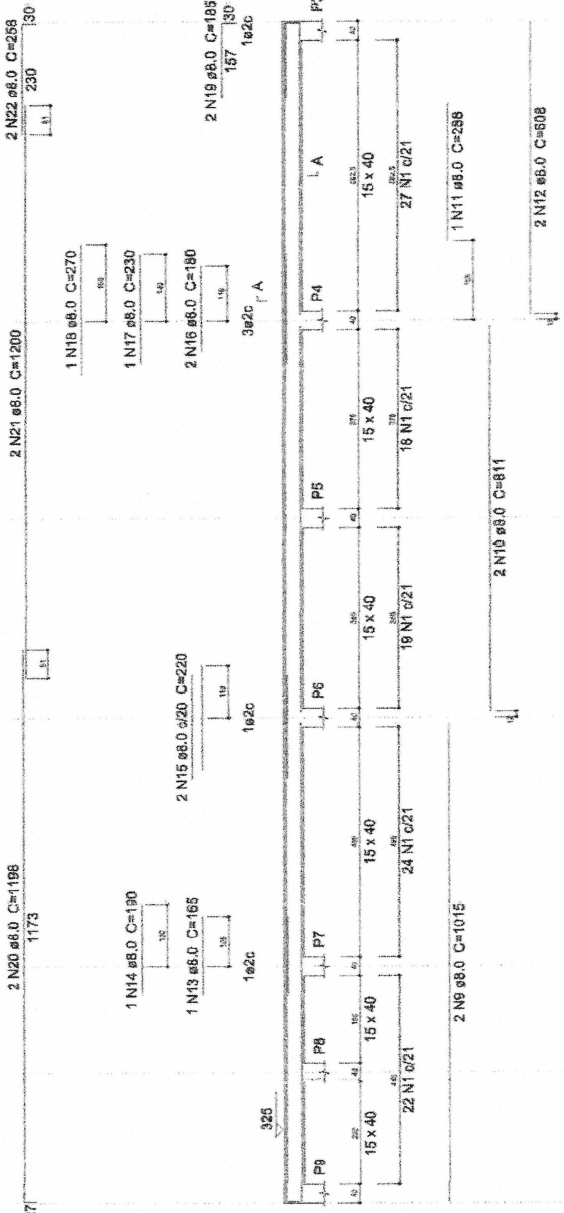
**V1**

ESC 1:50



**V2**

ESC 1:50

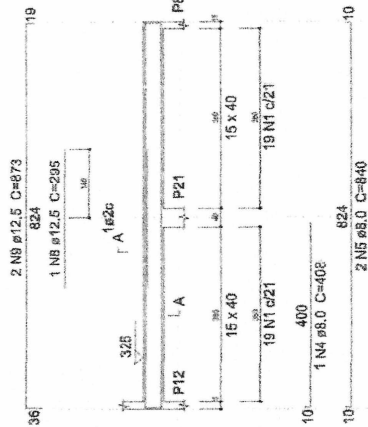


Handwritten signature or initials.





**V10**  
ESC 1:50



**P1**

TERREO - L2

ESC 1:30



22 N1 ø5.0 C=88  
44 N2 ø5.0 C=24

**P10=P21**

TERREO - L2

ESC 1:30



33 N1 ø5.0 C=88  
33 N3 ø5.0 C=24

**P10=P21**

TERREO - L2

ESC 1:20



33 N1 ø5.0 C=88  
33 N3 ø5.0 C=24

**Relação do aço**

ACO	N	DIAM (mm)	QUANT (Barra)	UNIT (cm)	C.TOTAL (cm)
CA60	1	5.0	357	98	34986
	2	5.0	44	24	1056
	3	5.0	297	24	7128
CA50	4	8.0	1	408	408
	5	8.0	2	840	1680
	6	10.0	28	322	9016
	7	10.0	92	363	33386
	8	12.5	1	295	295
	9	12.5	2	673	1746
	10	16.0	8	385	3080

**Resumo do aço**

ACO	DIAM (mm)	C.TOTAL (m)	PESO (kg)
CA50	5.0	20.9	8.2
	10.0	424.2	261.5
	12.5	20.5	19.7
	16.0	30.8	48.6
CA60	5.0	431.7	66.5
<b>PESO TOTAL (kg)</b>			
CA50			398
CA60			66.5

Volume de concreto (C-25) = 2.45 m³  
Área de forma = 43.64 m²

**P11=P15**

TERREO - L2

ESC 1:30



33 N1 ø5.0 C=88  
33 N3 ø5.0 C=24

**P12=P13=P14=P16**

TERREO - L2

ESC 1:30



33 N1 ø5.0 C=88  
33 N3 ø5.0 C=24

**P17**

TERREO - L2

ESC 1:20



33 N1 ø5.0 C=88  
33 N3 ø5.0 C=24

**P17**

TERREO - L2

ESC 1:20



33 N1 ø5.0 C=88  
33 N3 ø5.0 C=24



**LAZARUS LIMA FERREI**  
**ENGENHEIRO CIVIL**  
**CRECAE 22285**

TERMINO DO LICITACAO PARA ABRIR O ENVELOPE DO MANUSCRITO  
PROJETO ESTRUTURAL  
RUA JOAO CARLOS, S/N, DISTRITO DE PARQUE, UFPR/PR  
PRIMEIRO TERCEIRO  
GOVERNO MUNICIPAL DE CURITIBA  
RUA 9 DE ABRIL  
LACERDA LIMA FERREI  
RUA 1 DE ABRIL, 1000  
PRIMEIRO TERCEIRO  
PRIMEIRO TERCEIRO



**Relação do aço**

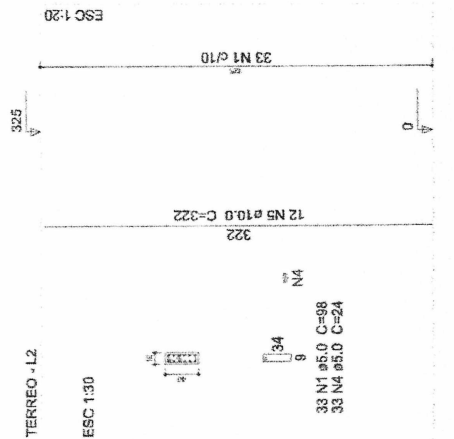
ACO	N	DIAM (mm)	QUANT (Barras)	UNIT (cm)	C.TOTAL (cm)
CA60	1	5.0	341	98	33418
	2	5.0	22	24	528
	3	5.0	22	24	528
CA50	4	5.0	396	24	9604
	5	10.0	96	322	30912
	6	12.5	10	322	3220
	7	16.0	10	322	3220

**Resumo do aço**

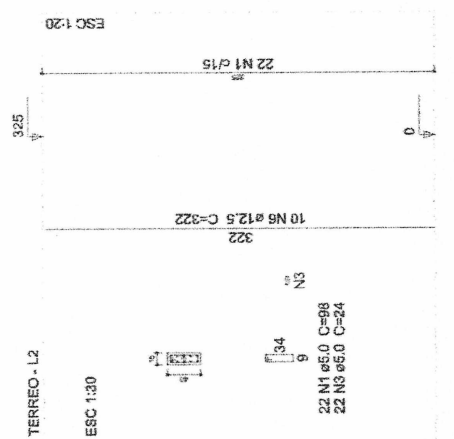
ACO	DIAM (mm)	C.TOTAL (m)	PESO (kg)
CA50	10.0	309.2	190.6
	12.5	32.2	31
	16.0	32.2	50.8
CA60	5.0	439.8	67.8
<b>PESO TOTAL (kg)</b>			
CA50			272.4
CA60			67.8

Volume de concreto (C-25) = 2.15 m³  
 Área de forma = 39.33 m²

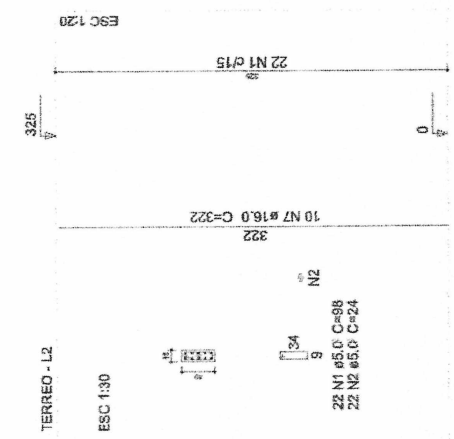
**P2**



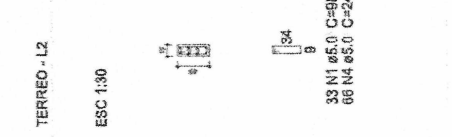
**P3**



**P4=P8**



**P5=P6=P18**



**P7=P20**



**P9=P19**



**LACOSTE LIA PEREIRA**  
**ENGENHEIRA CIVIL**  
**CRFA 32293**

DECLARAÇÃO DE QUE A EMPRESA ASSINA TERCEIRA EM NOME DA EMPRESA  
 PROJETO ESTRUTURAL  
 PARA O BARRACÃO Nº 1, ESTRETO DE BARRACÃO, BARRACÃO Nº 1  
 GOVERNO MUNICIPAL DE URUGUAI  
 LACOSTE LIA PEREIRA ENR  
 LACOSTE LIA PEREIRA ENR  
 LACOSTE LIA PEREIRA ENR

